

P38220

P25441

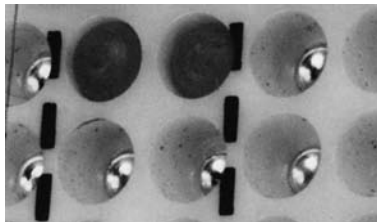


P53828

Ordering Information

Catalog Number	Part Number	Block Type	Qty.
P25441	F525441	BT25	50
P38220	F538220	CQF50	50
P53828	F553828	RLS50	80
URLSCAPRED	F800568	URLS	100

NOTE: Special service caps are used to identify special circuits on cross-connect blocks and/or terminal blocks.



1162
Test Field Insulator Button



1163
Circuit Designation Pin



1166
Terminal Caps - Special Circuit

Ordering Information

Catalog Number	Part Number	Description	Usage
1162	F013793	Test field insulator button (red).	Insulates individual contacts of the test field when testing with a front tap shoe. For use with R303, R305, R325 and R710 central office connectors
3991162	F014088	Test field insulator button (red).	Insulates individual contacts of the test field when testing with a front tap shoe. For use with 399 connectors
1163	F013794	Circuit Designation Pin (red).	This device marks individual special circuits when protection modules are removed. It fits into the vacant hole in module's contact location of the R303, R305, R325, and R710 central office connectors.
1166	F013788	Terminal caps - special circuit (red).	Terminal caps mark and protect wire-wrap terminals of special circuits.

Emerson Network Power.

The global leader in enabling business-critical continuity.

- AC Power
- Embedded Power
- Precision Cooling
- Connectivity
- Monitoring
- Racks & Integrated Cabinets
- DC Power
- **Outside Plant**
- Services
- Embedded Computing
- Power Switching & Controls
- Surge Protection

Emerson Network Power Energy Systems
4350 Weaver Parkway, Warrenville, IL 60555
Toll Free: 800-800-1280 (USA and Canada)
Telephone: 440-246-6999 Fax: 440-246-4876
EmersonNetworkPower.com/OSP

© 2007 Emerson Network Power Energy Systems, North America, Inc. All rights reserved.

The Emerson logo is a trademark and a service mark of Emerson Electric Co. Emerson Network Power is a division of Emerson Electric Co.

Printed in USA

