

## Upgrading an Application

### Requirements:

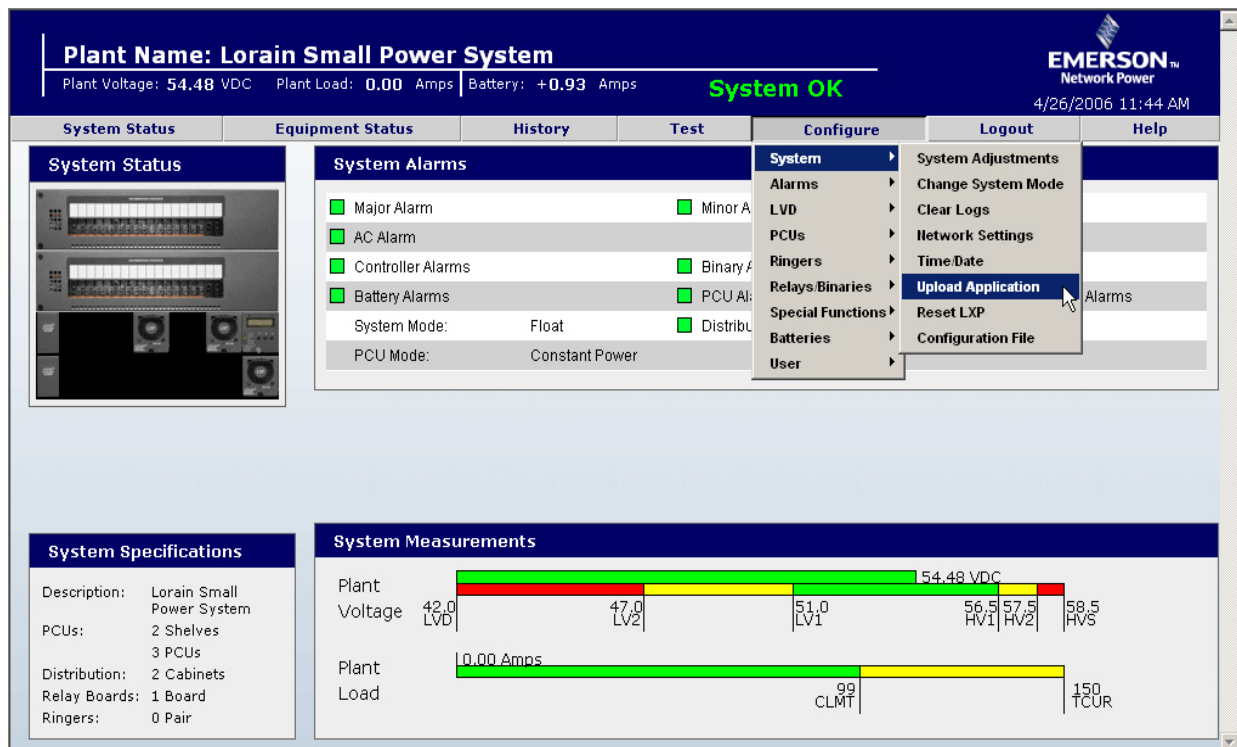
- 1) PC/Laptop with Ethernet connection
- 2) RJ-45 crossover cable between PC's Ethernet connection and LXP controller.

### Procedure:

- 1) Open an Internet Explorer window and type <http://192.168.1.1> in the address bar.

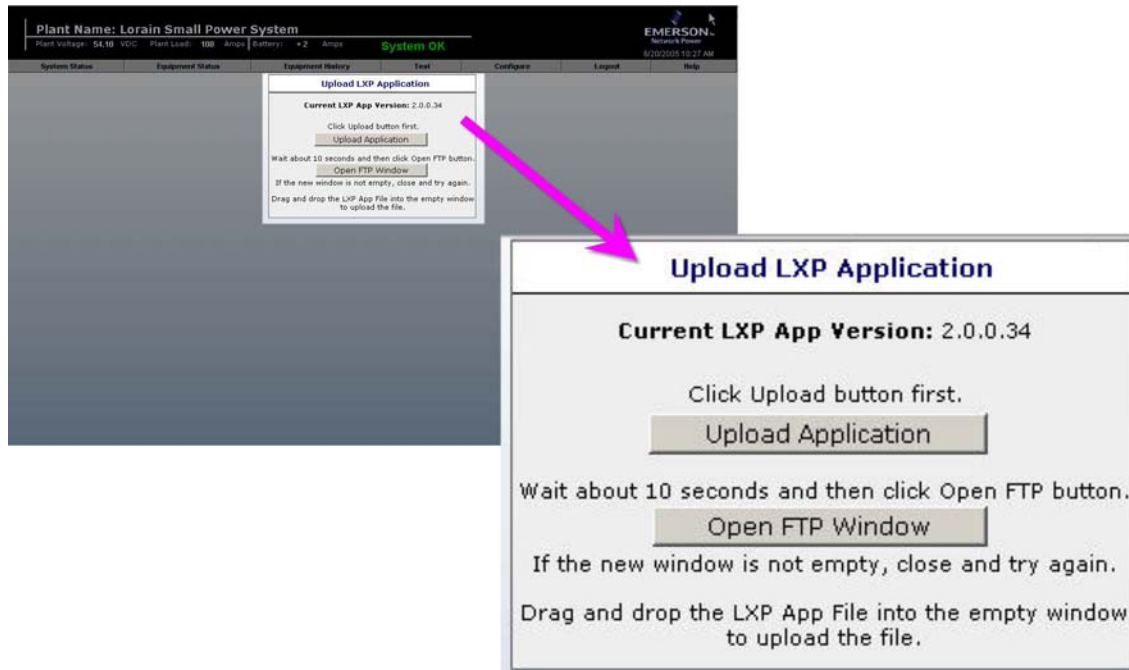
**Note:** The IP address is shown as reference only. The specific IP address and Gateway of the controller may vary.

- 2) Type "llp\_admin" as the **User Name** and **Password**.
- 3) On the toolbar, select **Configure**→**System**→**Upload Application**. (Refer to Figure 1.) The **Upload LXP Application** page opens.



**Figure 1**  
System Status Page

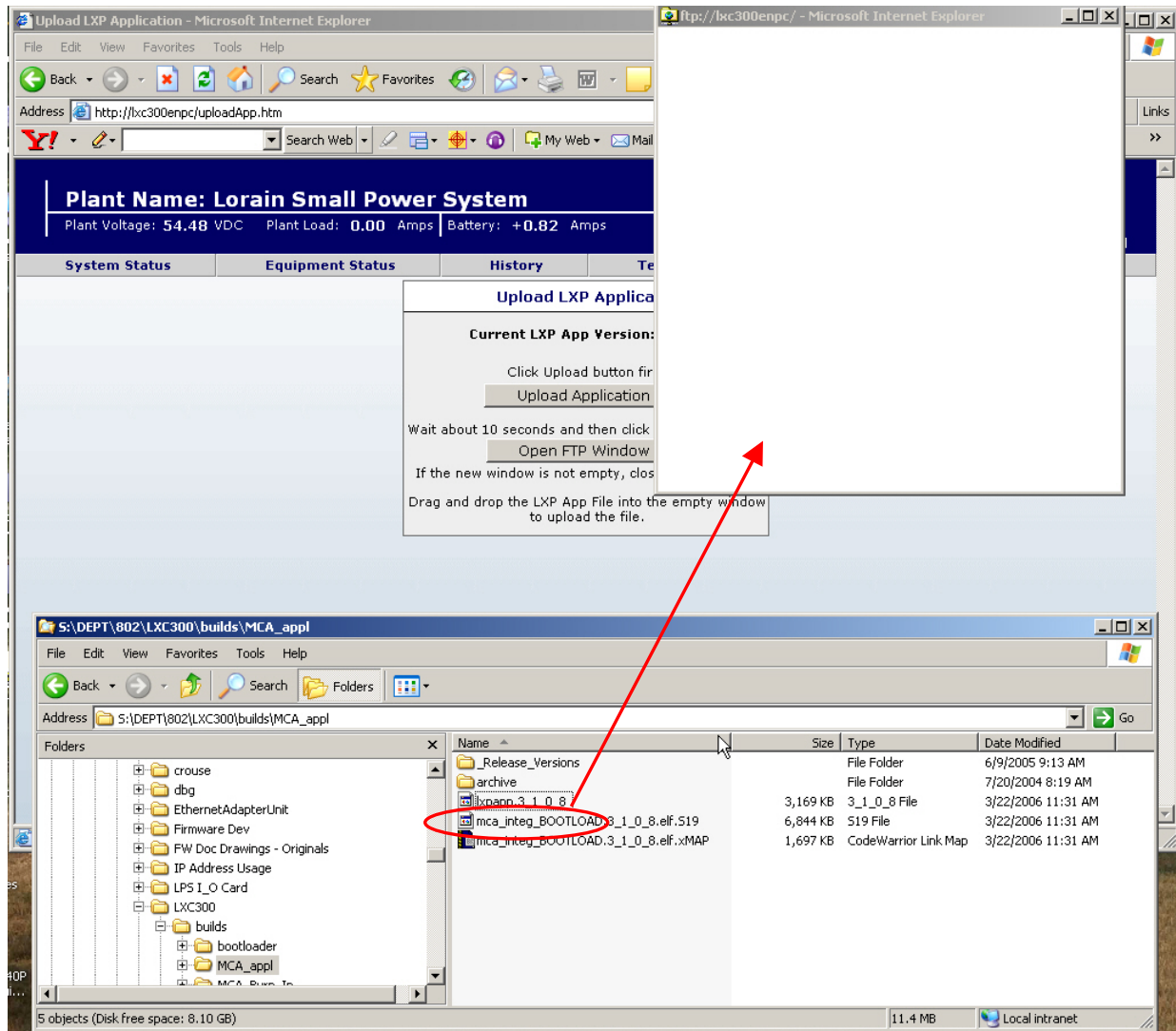
- 4) Click the **Upload Application** button. (Refer to Figure 2.)
- 5) A window with the following message will be displayed...*“Are you sure you wish to attempt uploading a new application (selecting yes causes the MCA to reboot)?”*



**Figure 2**  
**Upload Application Page**

- 6) To upload the application, select OK.
- 7) After approximately 10 seconds, the LXP controller display shows “CONTROLLER RESET OR DOWNLOAD”.
- 8) Click the **Open FTP Window** button. A second browser window opens.
 

**Note:** *If the new browser window is not empty, close the window and repeat step 4. When an empty browser window opens, continue.*
- 9) Open Windows Explorer to the directory with the new application file.
- 10) Drag the application file named “*lxpapp*” from Windows Explorer into the FTP window to start the file transfer. (Refer to Figure 3)



**Figure 3**  
**Drag-and-Drop**

**Note:** The shown directory structure and file name extension are for reference only. The specific location and version number may vary. The new application must be named "lxpapp".

- 11) The LXP controller will automatically reboot approximately one minute after the file transfer has successfully completed.
- 12) To verify settings, close all existing windows, and re-open Internet Explorer.