

Benefits

- Quickly gain insight into current and future data center requirements with executive reports that summarize all key capacity parameters.
- Easily understand increases and decreases in resource usage with month-to-month comparisons of key metrics.
- Improve planning and budgeting with precise knowledge about resources that will become limitations to future growth.
- Eliminate over- and under-provisioning by projecting “time remaining” for all infrastructure resources.

With the trend towards higher density computing, managing the interdependency between space, power, cooling, network port availability and other physical infrastructure resources has become increasingly complex. Data center management is faced with the difficult task of providing sufficient infrastructure for increases in computing capacity, yet keeping costs in line. Adding to the challenge is the long lead time for additional capacity and the impact of exceeding the capacity ceiling, causing disruptions in service or delays in rolling out essential systems.

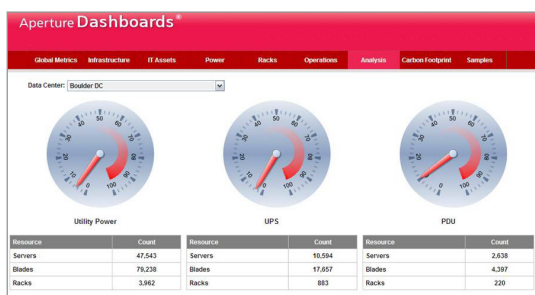
In-depth Insight into Current and Future Resource Consumption

Aperture Capacity Manager offers an effective solution to data center capacity management with extensive reporting into infrastructure consumption trends across multiple data centers. Unlike traditional applications that focus only on current usage, Aperture Capacity Manager provides insight into past, current and future usage of data center resources. With this unique ability to analyze historical trends and project usage, data centers can proactively manage resource capacity to economically support the present and future requirements of the organization.

A key component of the Aperture product line, Aperture Capacity Manager leverages information stored in the Aperture Configuration Manager repository to analyze the infrastructure consumption trends of each data center.

With Aperture Capacity Manager, you can:

- Effectively plan for the best allocation of data center resources by coordinating and maintaining a comprehensive capacity management plan, including scenario planning and budgeting for infrastructure use by different lines of business.
- More effectively align and prioritize installations and infrastructure build projects with the needs and objectives of the organization via detailed reporting on historical usage trends.
- Realize cost savings and eliminate over-provisioning with project pipeline management that provides clarity around how and when infrastructure will be used.
- Avoid the risks and costs of under-provisioning with proactive management of data center resources.
- Accurately understand the trends for virtual assets over time via integration with VMware and Microsoft Virtual Machine Manager, enabling reconciliation of virtual processes to physical hosts.



The Aperture high-level dashboard provides an intuitive snapshot of efficiency metrics that enable a quick assessment of infrastructure performance.

Comprehensive Capacity Management

- Manage and control key data center infrastructure parameters including floor and rack space, power, breaker positions, switch ports and even the capacity of data center staff to perform equipment changes.
- Update the configuration repository to automatically initiate requests for equipment installations, moves and decommissions, ensuring that the data reflects the current environment, capacity metrics are accurate and equipment changes occur in a timely manner.
- View current utilization of resources at the aggregate, data-center level or for individual resources.
- Use historical data to determine trends, calculate resources remaining, project resource expenditure dates and determine resource limits.
- Develop scenarios for future installation or decommission projects and translate these into resource requirements, installation and decommission requests.
- Spot underutilized rack space with hierarchical views of space that provide more detailed insight into data center capacity.
- Identify infrastructure in the context of discrete categories, such as denoting a server as belonging to a particular department, organizational group or function.

Broad and Deep Capacity Management Reporting

- Consumption charts show the availability and rate of consumption for all key infrastructure parameters on a monthly basis.
- Trend reports offer fine-grained insight into trends for key data center metrics, such as used floor area, rack space, copper or fiber ports, power, kilowatts per rack and specific kilowatt areas.
- Summary reports provide a dashboard view into infrastructure capacities, detailing current capacity of data center resources across all data centers. Data center management can also understand how quickly resources are being consumed through month-to-month trending metrics.
- A set of pre-built dashboard wizards are easily configured to represent relevant data sources, measured values and key performance indicators.

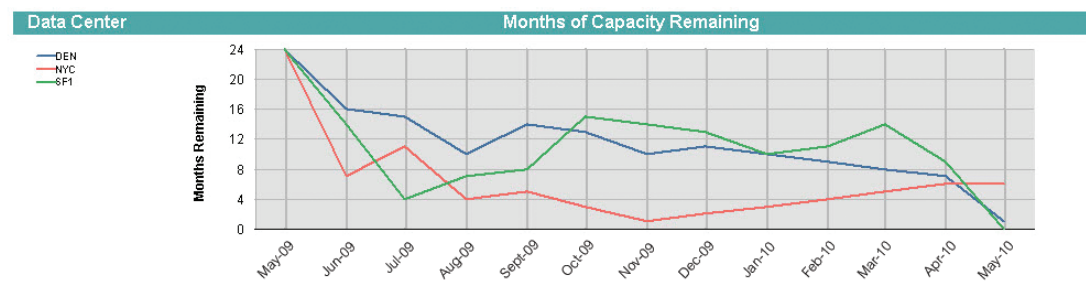
Data Center Monthly Summary (April 01, 2010 - May 01, 2010)

Aperture®
9/30/2009 11:41:30 AM

Data Center	% Used and Change from Last Month											
	Floor Space (Raised Floor)		Rack Space (RU)		Power (Supplied)		Breaker Positions		Copper Ports (On Switches)		Fiber Ports (On Switches)	
DEN	73.34%	+2.07%	78.15%	+1.59%	35.34%	+0.80%	2.53%	+0.30%	71.76%	+5.89%	50.00%	+3.00%
NYC	43.33%	+3.33%	16.67%	0.00%	50.00%	0.00%	67.44%	0.00%	70.00%	0.00%	91.00%	0.00%
SF1	22.63%	+0.20%	19.37%	+4.04%	44.75%	+1.23%	48.83%	+1.76%	17.00%	+2.98%	67.00%	+4.00%

▲ Warning Level ▲ Critical Level

Data Center	Data Center Metrics											
	Available Floor Space (ft²)		Available Rack Space (RU)		Available Power (kW)		Total Racks / Cabinets		Total Servers		Total EMAC Installs	
DEN	9,331.00	-726.00	1,100	-80	646,600	-8.033	58	+20	180	+20	695	0
NYC	1,700.00	-166.00	2,000	0	10,000	0.000	75	+20	300	+42	1,043	0
SF1	11,605.27	-29.73	10,900	+400	828,738	-18.410	300	+19	320	+10	1,167	0



The Consolidated Monthly Summary Report provides a quick view of the available capacity for multiple parameters in each data center.

Emerson Network Power.

The global leader in enabling Business-Critical Continuity™.

- | | | | |
|--------------|--------------------|--|-----------------------------|
| AC Power | Embedded Computing | Infrastructure Management & Monitoring | Precision Cooling |
| Connectivity | Embedded Power | Outside Plant | Racks & Integrated Cabinets |
| DC Power | Industrial Power | Power Switching & Controls | Services |

EmersonNetworkPower.com

Emerson Network Power
emersonnetworkpower.com/aperture

EmersonNetworkPower.com

Emerson, Business-Critical Continuity, Emerson Network Power and Aperture are trademarks of Emerson Electric Co. or one of its affiliated companies. ©2010 Emerson Electric Co. 1211-APTCAPMGR-DS-EN