

SAMPLE REPORT

Attention:

Mr. John Smith

1, Acacia Avenue
London SW32NL

Eastleigh , 26/01/2007

CHLORIDE LIFE.net remote monitoring system REPORT for the period from 08/06/2006 to 08/07/2006 for a total of 31 days.

UPS location 1, Acacia Avenue
 London SW32NL

UPS Serial number	Model	Type	LIFE.net activated as from
0405U20015	70 Net * 20 KVA	Single UPS	05/07/2005

Technical comments and recommendations

The alarm call(s) this period were due to on site switching of the UPS/site mains failures.

Thank you

If you require any further clarifications, please contact us by phone or e-mail us at the numbers/address given below.

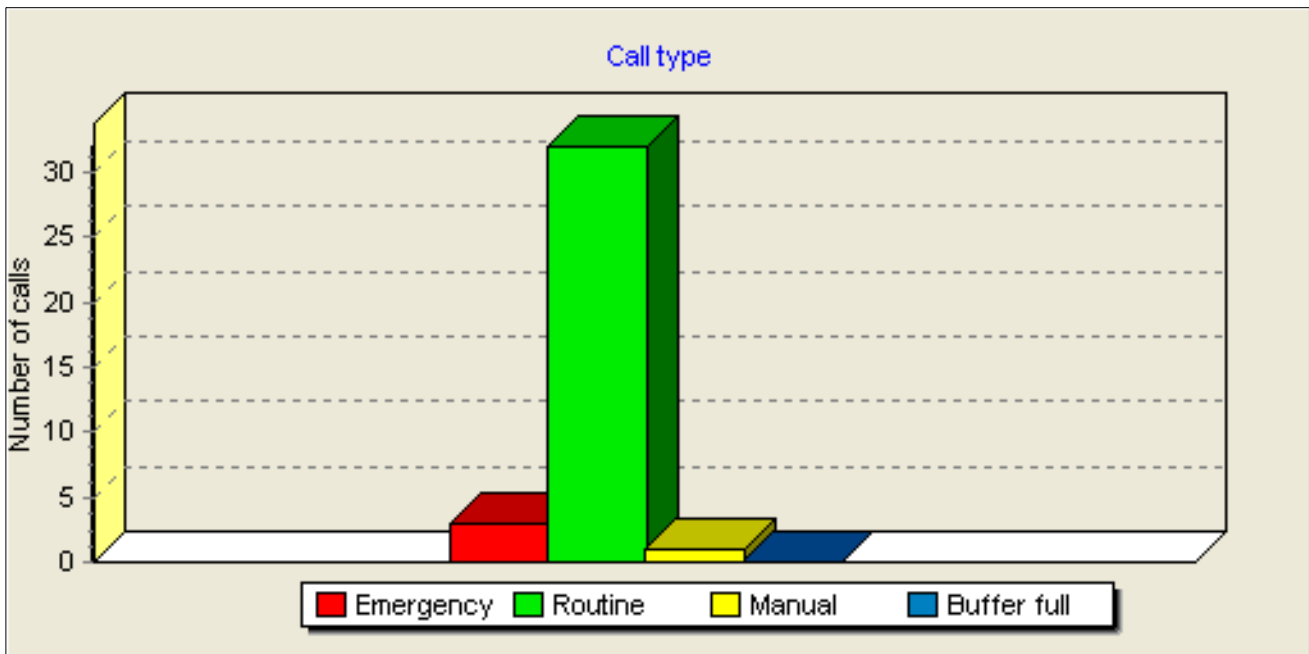
Kind regards,

Customer Service

Call statistics.

Call type	Number of calls
Total emergency calls.	3
Total routine calls.	32
Total manual calls.	1
Total buffer full calls.	0
Total calls.	36

Last call date : 26/01/2007 05:06:12

**Overload detected**

The UPS load exceeded the correct operating limits 7 times.

N.	Start date	End date	Total time
1	17/06/2006 17:10:46	17/06/2006 17:10:48	2"
2	17/06/2006 17:19:20	17/06/2006 17:19:22	2"
3	19/06/2006 06:46:51	19/06/2006 06:46:53	2"
4	20/06/2006 06:46:39	20/06/2006 06:46:41	2"
5	20/06/2006 08:37:30	20/06/2006 08:37:32	2"
6	26/06/2006 06:43:52	26/06/2006 06:43:54	2"
7	28/06/2006 06:44:19	28/06/2006 06:44:20	1"

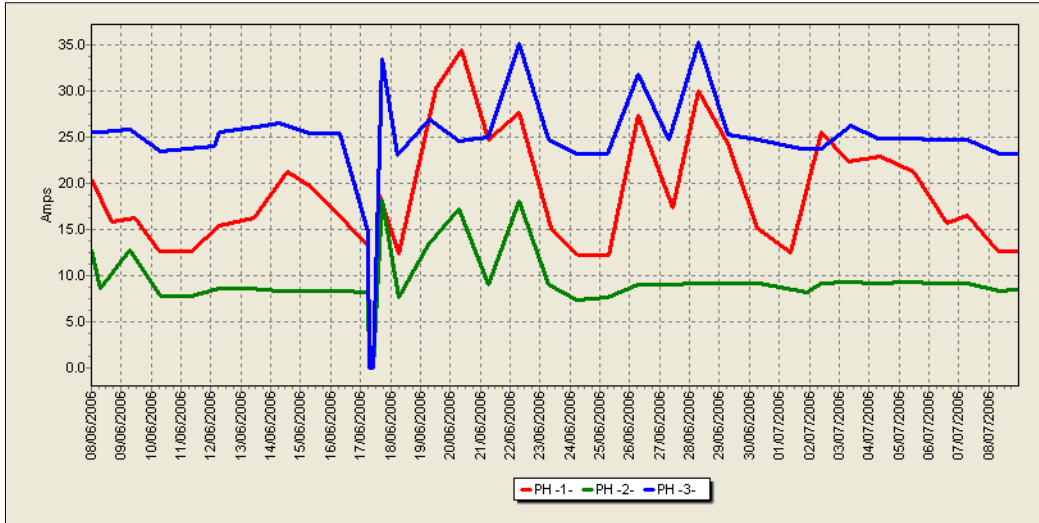
The UPS load was not switched to the automatic bypass supply.

N.	Start date	End date	Total time

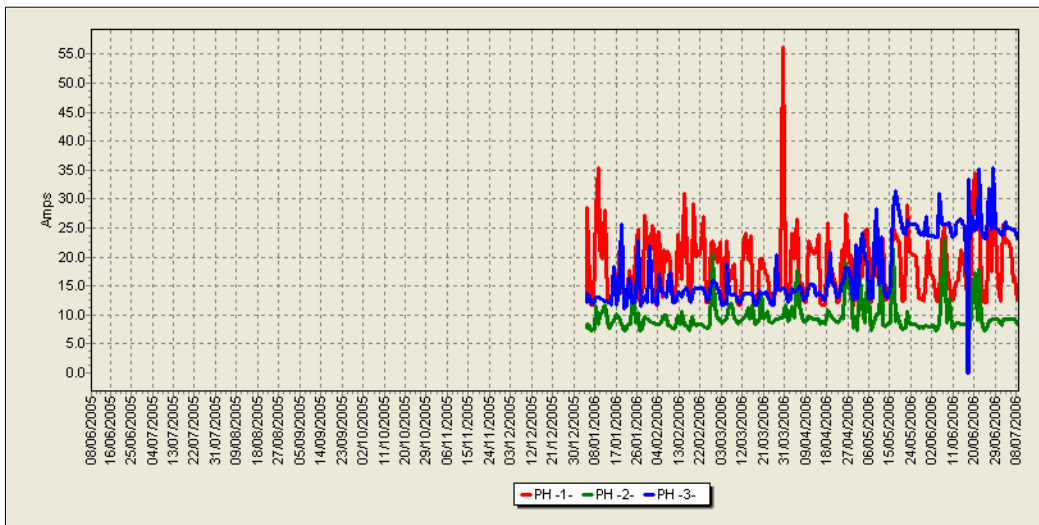
Max load current per phase

The graph below illustrates the current measured at the equipment output. Remember that the nominal output current is (20 kVA - 380 V) = 30 Amperes per phase.

31 day trend



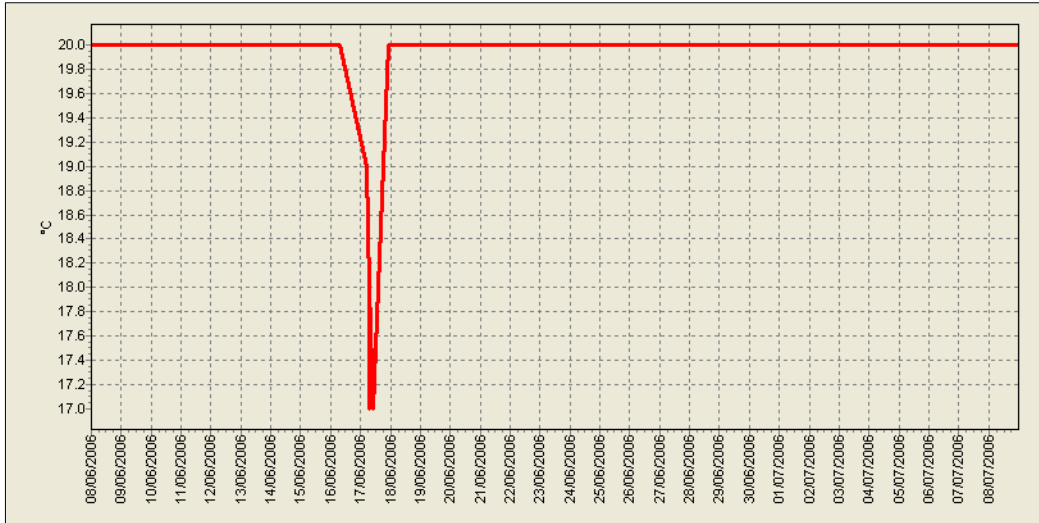
Annual trend



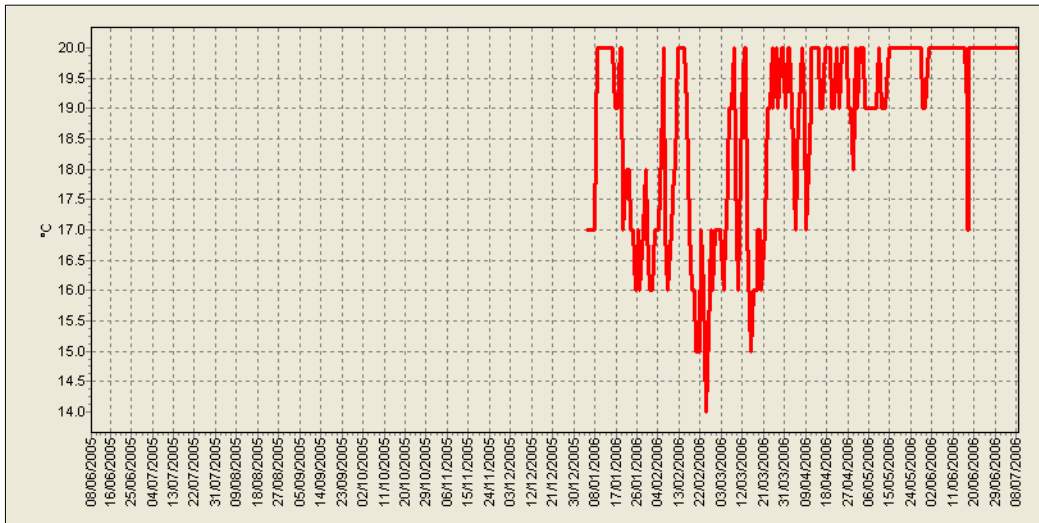
Battery room/cubicle temperature.

The recommended battery room temperature is between 20°C and 25°C. Remember that nominal battery life is reduced by 50% for each increase of 10°C above 25°C.

31 day trend



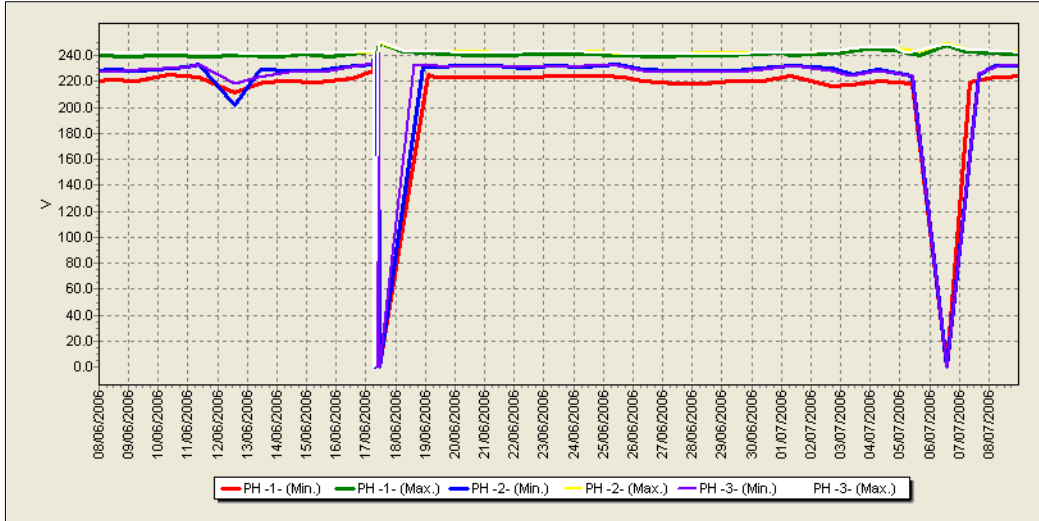
Annual trend



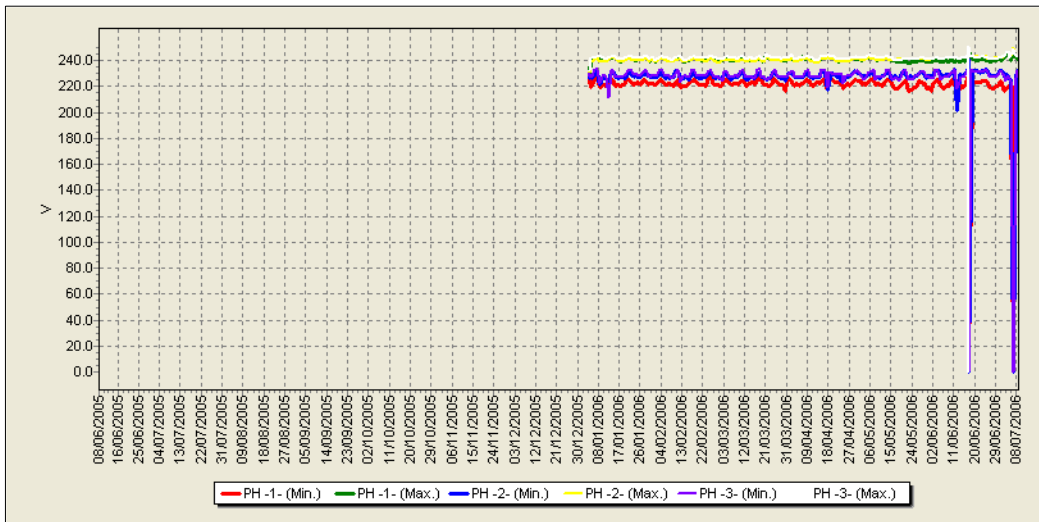
Primary mains voltage phase 1

The graph below illustrates the minimum and maximum primary mains voltage trend.

31 day trend

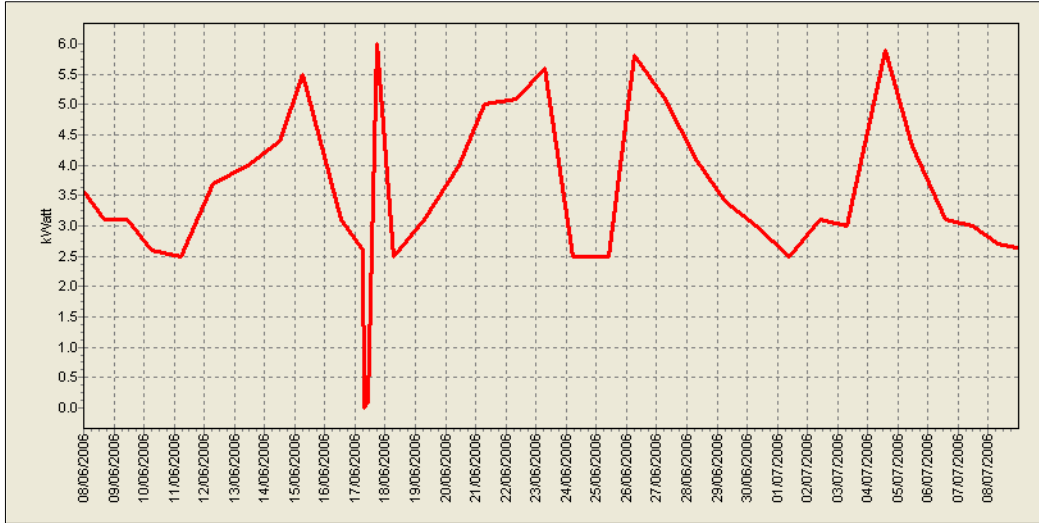


Annual trend

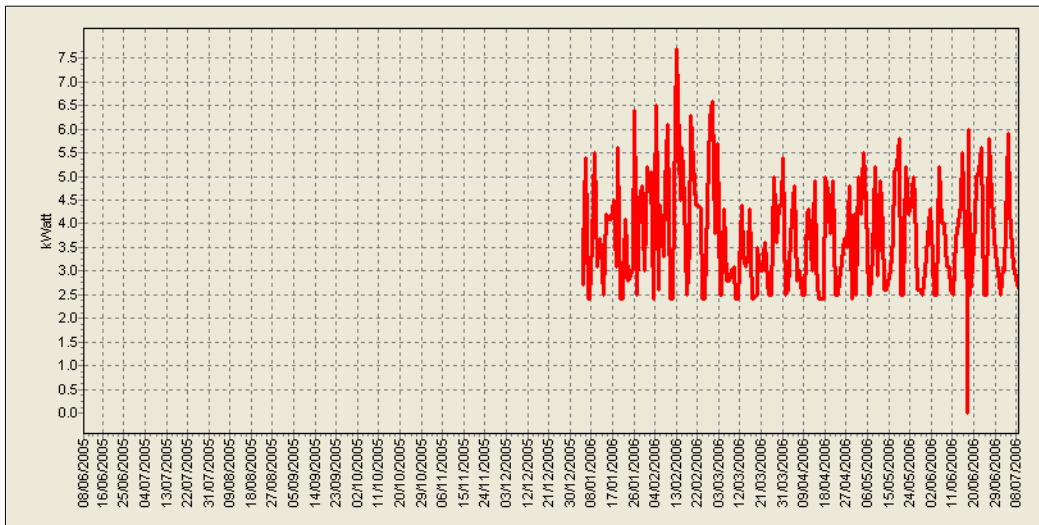


Real output power phase 1

31 day trend

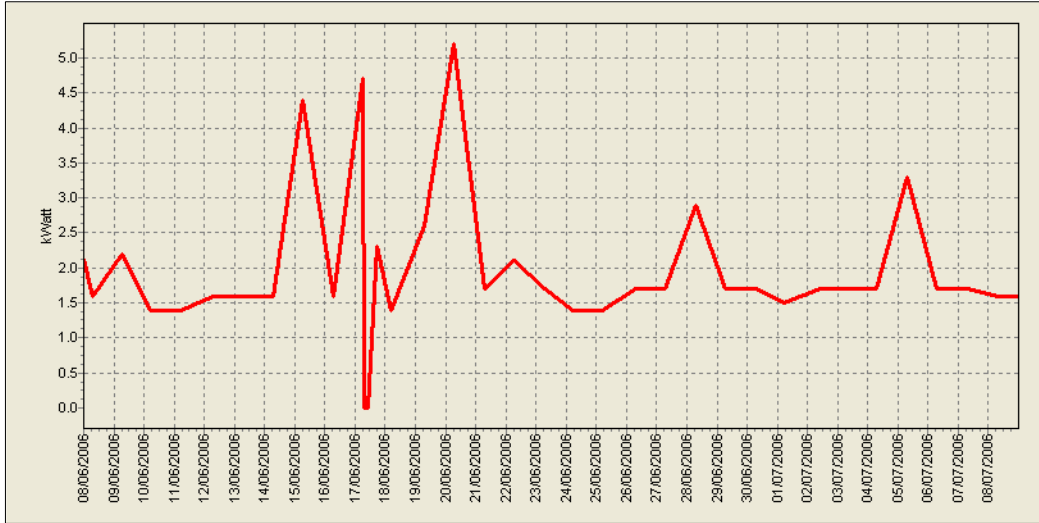


Annual trend

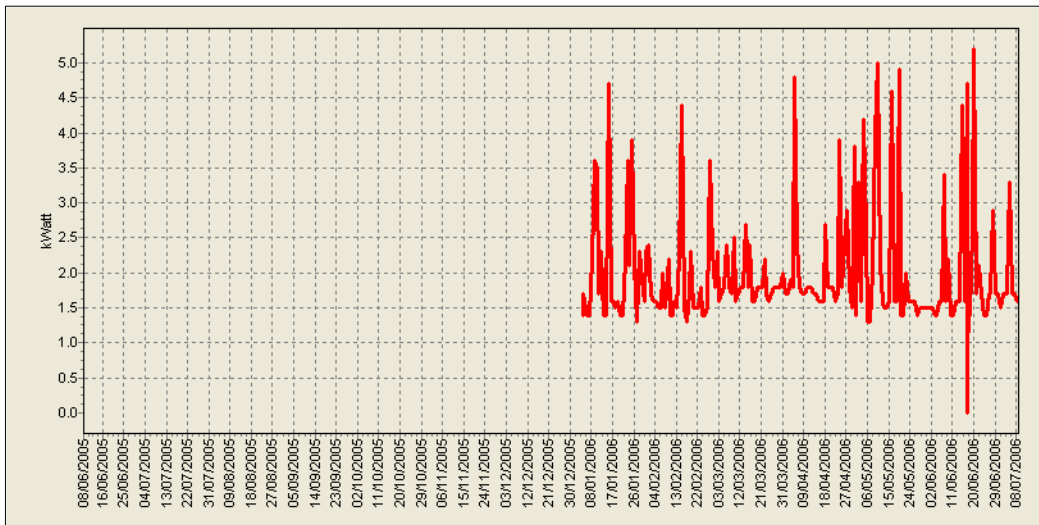


Real output power phase 2

31 day trend

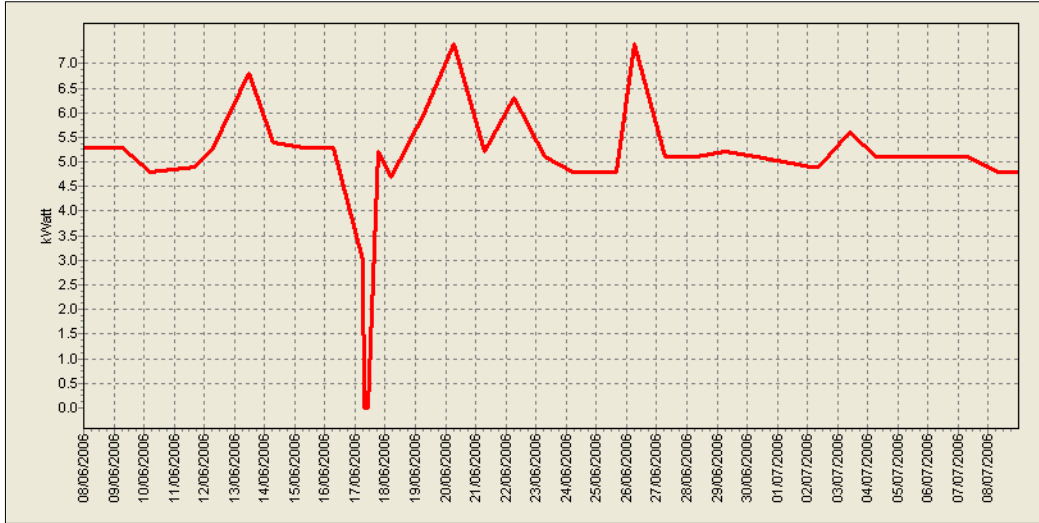


Annual trend

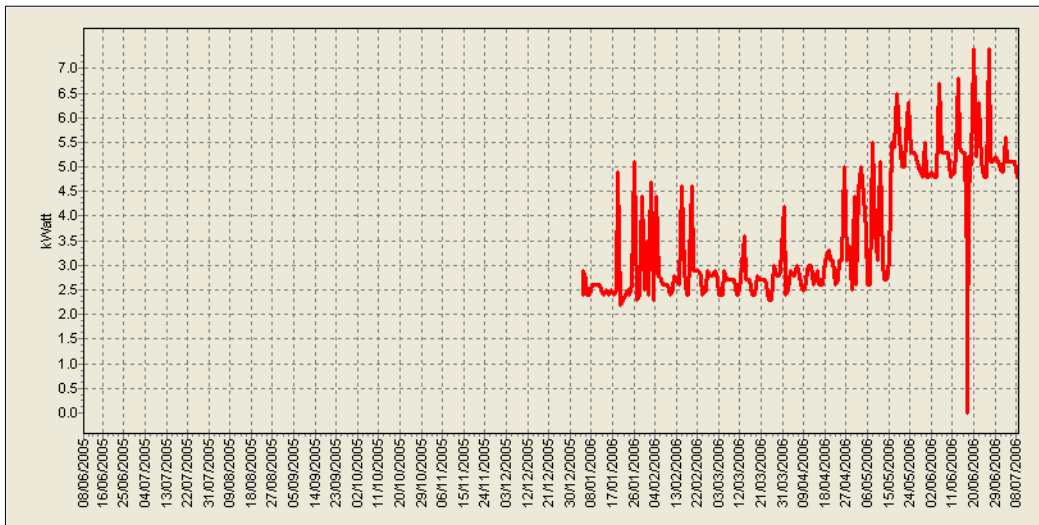


Real output power phase 3

31 day trend



Annual trend



Event statistics

Event description	Number of times	Time (hh:mm:ss)
Mains power failure	9	3:05:35
Battery test	2	0:01:03
Inverter overload operation	7	0:00:13
Bypass mains failure	3	3:03:55
Bypass on	7	0:09:18
Output load not supplied	2	3:03:55
Load on low priority line	7	0:09:18
Overload	7	0:00:13
Load current ph1 over 85%	4	0:00:05
Load current ph2 over 85%	4	0:00:05
Load current ph3 over 85%	4	0:00:05
Service Bypass is on	1	0:00:26

- Mains power failure : This message indicates that the mains input has failed or gone out of tolerance
- Battery test : This message indicates that the UPS has tested the state of the batteries
- Inverter overload operation : This is an alarm condition indicating that there is an overload. It is triggered when the load tries to draw more than 100% of the nominal current.
- Bypass mains failure : This message indicates that the mains at the bypass has failed or gone out of tolerance
- Bypass on : This status message indicates that the bypass is on
- Output load not supplied : This is an alarm indicating that the load is not being supplied
- Load on low priority line : This message indicates that the load has transferred to the low priority line (Inverter or Reserve) because the selected line is not available
- Overload : This is an alarm condition indicating that there is an overload. It is triggered when the load tries to draw more than 100% of the nominal current
- Load current ph1 over 85% : This message indicates that the current on phase 1 has exceeded 85% of the nominal current
- Load current ph2 over 85% : This message indicates that the current on phase 2 has exceeded 85% of the nominal current
- Load current ph3 over 85% : This message indicates that the current on phase 3 has exceeded 85% of the nominal current
- Service Bypass is on : This message indicates that the service bypass was switched on